



**IT'S LONDON
INNIT!**



LONDON, ENGLAND

London. Never boring, never quiet, the British capital is at the heart of world culture, sport, history and shopping. Immerse yourself in everything London over three exciting days.

Using the London Underground, you can discover everything that makes London one of the best cities in the world. Once you have your Oyster card loaded with money, discovering every corner of London is easy - just make sure you Mind the Gap and stay right on the elevators! Here's our three-day itinerary for London.



TABLE OF CONTENTS

4	DAY 1: Royals, government and religion
6	DAY 2: A scope on history (and the city!)
7	DAY 3: Take your place in history
8	CONCLUSION

DAY 1

ROYALS, GOVERNMENT AND RELIGION

There is no place better to start your London adventure than at the quintessential British institution - Buckingham Palace. Catch the Tube to Charing Cross on the Northern and Bakerloo lines. Walk through the Admiralty Arch onto The Mall - the promenade that leads you to Buckingham Palace. As the official residence of Britain's monarchy since 1837, Buckingham Palace remains one of the most famous tourist spots in London. Be sure to stop by the palace for the Changing of the Guard ceremony where the Foot Guards take up their spots outside the palace.

Take a stroll through the beautiful St James' Park, towards the River Thames, past the Churchill War Rooms towards the heart of London - Westminster Abbey, the Houses of Parliament and the iconic Big Ben.

The current Westminster Abbey dates back the 13th century, however Edward the Confessor constructed the first church on that site in 1065, just before the Norman Invasion the following year. Westminster Abbey has also hosted the coronation of every English monarch crowned since William the Conqueror - all 39 of them.



THE CURRENT WESTMINSTER ABBEY DATES BACK THE 13TH CENTURY, HOWEVER EDWARD THE CONFESSOR CONSTRUCTED THE FIRST CHURCH ON THAT SITE IN 1065,



GATES AT THE BUCKINGHAM PALACE



Built in 1245 by Henry III, Westminster Abbey is one of the most important Gothic buildings in the United Kingdom. With a treasury full of artefacts, paintings and books as well as being the resting place of 17 monarchs, it's an impressive location to say the least. Across the road is the Houses of Parliament, the home of the United Kingdom government. The current impressive architecture dates back to the mid-19th century, having been damaged in an 1834 fire. If you have time, you can book a tour through both the House of Commons and House of Lords to see the democracy in action!

Around the corner, there is no missing the next stop - Big Ben. World famous, its actual name is Elizabeth Tower with the nickname Big Ben given to the Great Bell at the top. For the best picture opportunity, wander over to the Westminster Bridge with the other scores of visitors and grab a selfie with Big Ben - you can even get the Houses of Parliament in the frame as well!

If it's time to travel back towards your accommodation or a spot of dinner at many of the great restaurants across London, the closest tube station is Westminster across the road from Big Ben - look out for the famous logo!

Of course, should the London weather let you down, there are always the array of indoor activities to occupy yourself with. This includes the Victoria and Albert Museum (the world's greatest museum of art and design), the Natural History Museum and the Science Museum - all located in Knightsbridge (a short Tube ride from anywhere in central London).





DAY 2

A SCOPE ON HISTORY (AND THE CITY!)

Day two brings even more opportunities to see the London in all its glory. Start the day by travelling by tube to Russell Square on the Piccadilly Line. As you cross Russell Square, you'll grab a glimpse of the first location - The British Museum. Spend the morning exploring the various exhibitions that take in two million years of human history and culture. From Egyptian mummies and Parthenon sculptures to the Rosetta Stone, get lost in this maze of fascinating exhibitions.

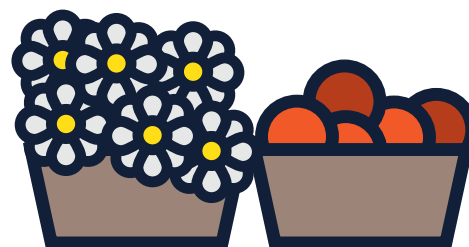
If you're ready to get back into the fresh air, it might be time to explore Covent Garden (also on the Piccadilly Line) in London's West End. As well as being the hub of all things theatre and entertainment, Covent Garden is home to various street and flea markets where you can peruse the local goods, street performances and a car-free Piazza.

From Covent Garden, it's a short walk through the iconic Trafalgar Square (or Tube to Embankment) towards the River Thames again. While you might be tempted to grab a photo of Big Ben, we're here for The London Eye. For a full 360-degree view of the city, book your place in one of the 32 enclosed capsules for a ride to remember.

Once you've been on The London Eye, enjoy the green of Jubilee Gardens, take in the views and do a spot of people watching! From here, it's a short walk to the Waterloo Tube where you can make your way back to your accommodation.



FLOWERS IN THE COVENT GARDEN MARKET



**COVENT GARDEN IS HOME TO VARIOUS STREET
AND FLEA MARKETS WHERE YOU CAN PERUSE
THE LOCAL GOODS AND STREET PERFORMANCES.**



DAY
3

TAKE YOUR PLACE IN HISTORY

On your last full day in the capital, it's time to explore the area called the City of London.

Take the tube to St Paul's (Central line) and follow the signs to St Paul's Cathedral. Playing host to both Winston Churchill's state funeral and the Royal Wedding of Prince Charles and Lady Diana Spencer, St Paul's dates back to the 17th century. Take a guided tour of the five level Cathedral or just admire the architecture at your own pace.

Walk down Cheapside to Bank Tube station where you can travel to Liverpool Street on the circle line connecting to Tower Hill. This is the best tube station for the famous Tower of London.

Site of the Crown Jewels as well as the Bloody Tower, the Tower of London was a prison over many centuries and the site of countless public executions. It even housed zoo animals such as lions and bears at one point. You can easily spend the afternoon exploring its vast grounds and building on a tour.

You can spot the next location from the Tower of London, Tower Bridge. Around 42 metres above the River Thames, it's one of the best examples of Victorian engineering in London. If you have time, wait for a boat to come by with the two arms of the bridge raising high in the air to allow the craft through - certainly worth a photo or two!

One landmark that is clear from Tower Bridge is The Shard - the tallest building in Western Europe (310m). On a clear day, it's possible to see up to over 60km in any direction from the highest viewing platform in London. With its jagged glass architecture, there's no mistaking The Shard.

While three days in London isn't long, you can certainly pack a few attractions into this city thanks to its excellent public transport system. And who knows; perhaps you'll return in the future and see more famous sights!



THE SHARD



CONCLUSION

For more information about exploring the grand city of London and other top destinations around the world, get in touch with the team at DriveNow today.



SOURCES:

https://www.tripadvisor.co.nz/Guide-g186338-k8-London_England.html
https://www.tripadvisor.co.nz/Attraction_Review-g186338-d211708-Reviews-Houses_of_Parliament-London_England.html
<https://www.travelalphas.com/three-days-in-london-itinerary/>
https://www.tripadvisor.co.nz/Attraction_Review-g186338-d187555-Reviews-British_Museum-London_England.html
https://www.tripadvisor.co.nz/Attraction_Review-g186338-d187552-Reviews-Tower_Bridge-London_England.html
https://www.tripadvisor.co.nz/Attraction_Review-g186338-d553603-Reviews-The_London_Eye-London_England.html
https://www.tripadvisor.co.nz/Attraction_Review-g186338-d211708-Reviews-Houses_of_Parliament-London_England.html
https://www.tripadvisor.co.nz/Attraction_Review-g186338-d187547-Reviews-Tower_of_London-London_England.html
https://www.tripadvisor.co.nz/Attraction_Review-g186338-d187556-Reviews-V_A_Victoria_and_Albert_Museum-London_England.html





Helping travellers find the best deals on campervan
and car rental since 2003

www.drivenow.com.au