



ROAD TO THE REPUBLIC OF IRELAND



Take a trip around the green lands of Ireland with DriveNow, journeying back in time through historic towns, villages, rustic pubs and rugged landscapes.

Pick up your hired car from Dublin Airport and start your Irish adventure - expect a picturesque and fun journey that takes you to some of the oldest locations in the world. Meet the friendly locals everywhere as you go from the capital Dublin, south into Kilkenny and Cork, into the western regions of Clare, Limerick and Galway, and north to Sligo and Dundalk before returning to Dublin.

REPUBLIC OF IRELAND

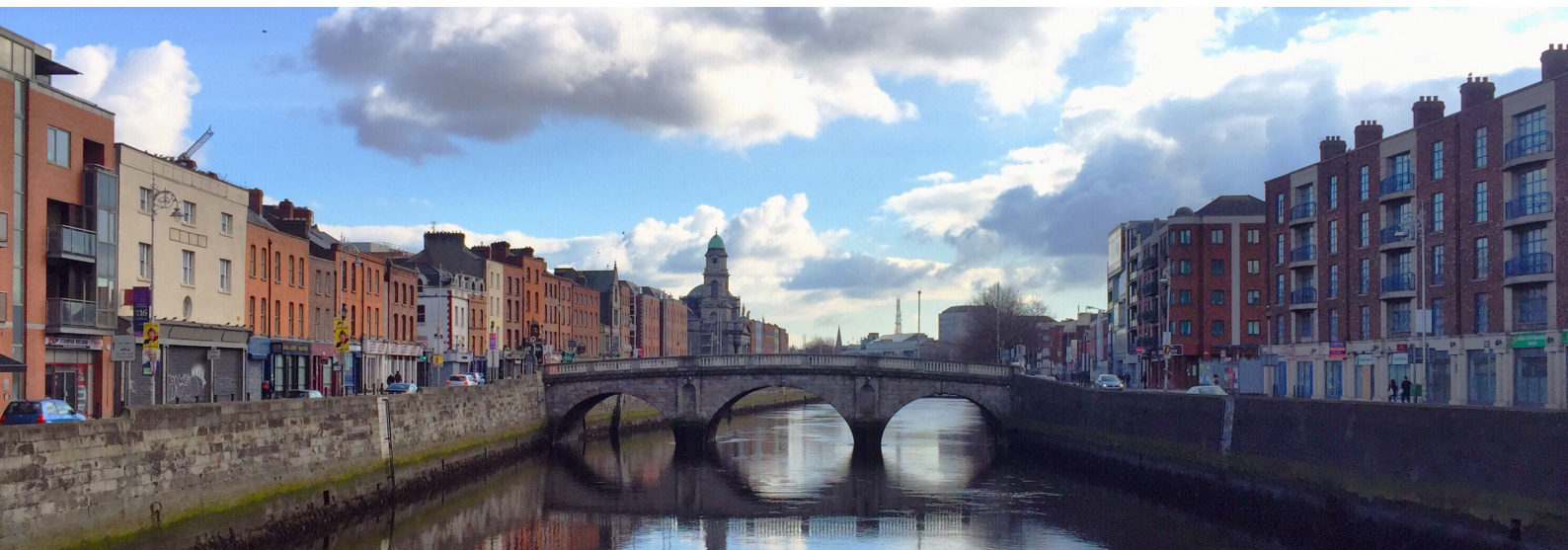


TABLE OF CONTENTS

4	DAY 1: Dublin to Kilkenny
5	DAY 2: Kilkenny to Cork
6	DAY 3: Cork to Limerick
7	DAY 4: Limerick to Galway
8	DAY 5: Galway to Sligo
9	DAY 6: Sligo to Dundalk
10	DAY 7: Dundalk to Dublin
11	CONCLUSION



DAY
1

DUBLIN TO KILKENNY (1 HOUR, 25 MINUTES)

Finding the right car for your Irish adventure is simple with DriveNow. All you have to do is choose your dream vehicle type and the dates of travel - DriveNow will do all the hard work locating the best deal for your trip. As such, when you land at Dublin Airport, the keys are ready and waiting at the hire car firm.

With a full tank, get on the M50 which takes you around the edge of Dublin until you get to the N7 intersection. From here, you're heading south towards the medieval city of Kilkenny - making the turn onto the M9 just outside of Newbridge.

Spend the day exploring Kilkenny, visiting local sites such as Kilkenny Castle, St. Canice's Cathedral & Round Tower and Jerpoint Abbey. Don't miss a tour of Kilkenny Castle which was built back in 1195 to control the River Nore and several routeways. The dramatic castle has extensive parklands, an art gallery and a playground for the kids.

Stop of at the legendary Smithwick's Experience Kilkenny for a bite to eat and a sample of the local brew. In the afternoon, challenge yourself on the Brandon Hill Loop where you can overview the local area - located 40 mins east via R700.



**STOP OF AT THE LEGENDARY SMITHWICK'S EXPERIENCE
KILKENNY FOR A BITE TO EAT AND A SAMPLE OF THE
LOCAL BREW.**



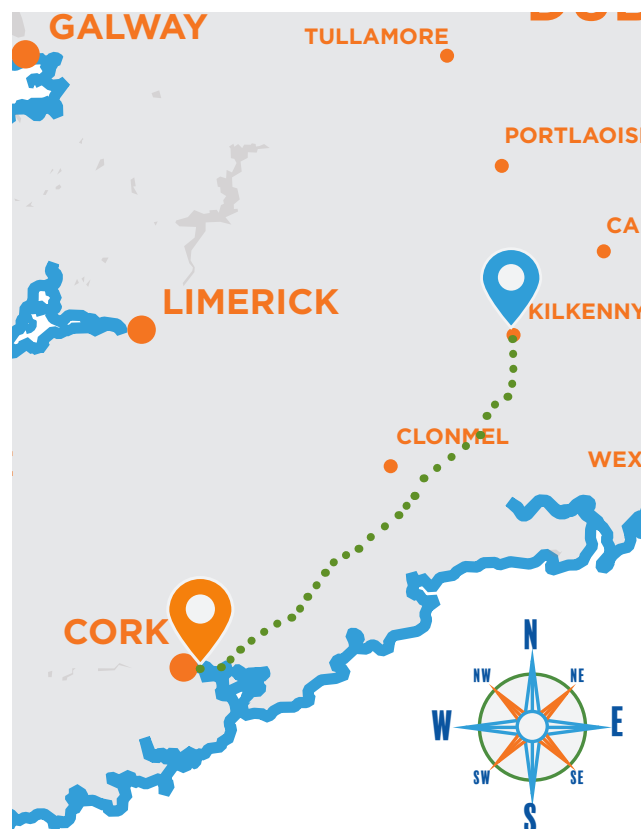
DAY
2

KILKENNY TO CORK (1 HOUR, 55 MINUTES)

The next day depart Kilkenny west on the R693 towards the M8 then south to Cork. This scenic route passes through some of the richest Irish farmland, and there are many small towns to pop into for a spot of brunch.

This university city's centre is on an island in the River Lee - connected to Cork Harbour. Spend the morning in the heart of the city at the English Market, exploring Brown Thomas for some shopping and snapping a souvenir photo at St Patrick's Bridge. In the afternoon, you can look into the historic side of Cork - namely the Cork City Gaol, dating back to 1806 and Crawford Art Gallery which houses collections of 17th century classical Greek and Roman statues. Enjoy dinner at Cafe Paradiso Restaurant - one of the best eateries in Cork.

Cork is also home to the famous Blarney Stones, a block of Carboniferous limestone that tourists come to kiss to be blessed with the gift of the gab. Part of Blarney Castle, it's simply something that a visit to Ireland must include!



CORK IS ALSO HOME TO THE FAMOUS BLARNEY STONES, A BLOCK OF CARBONIFEROUS LIMESTONE THAT TOURISTS COME TO KISS TO BE BLESSED WITH THE GIFT OF THE GAB.



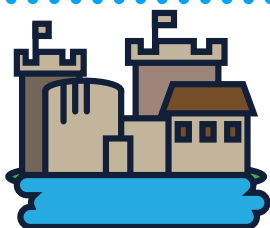
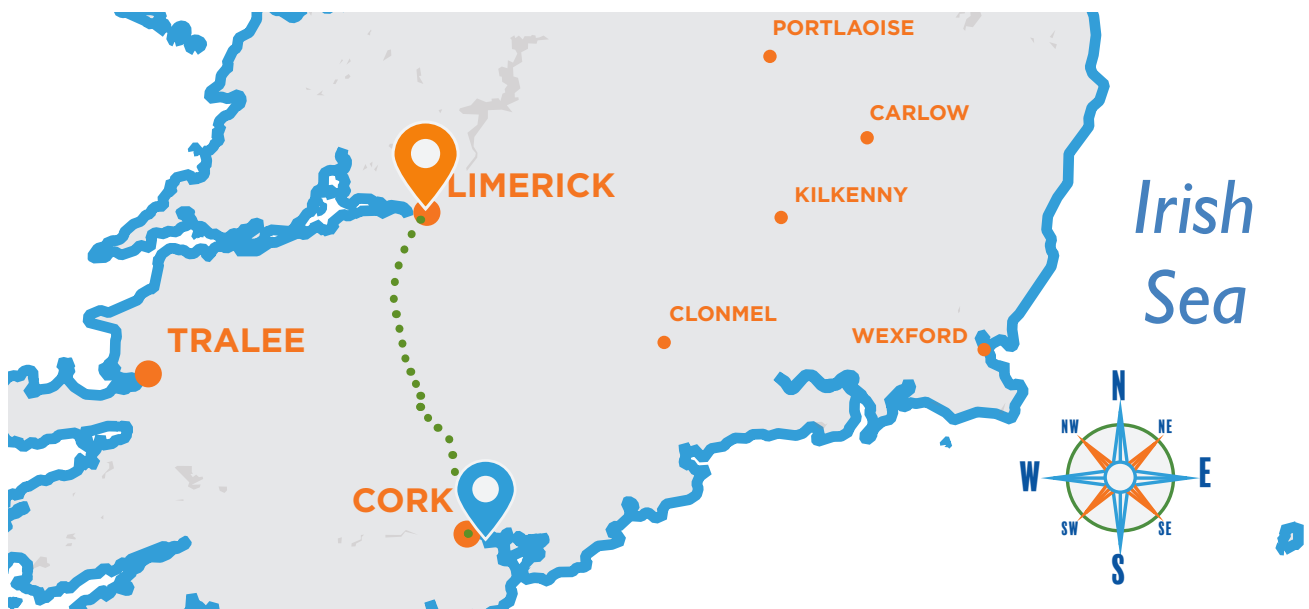
DAY
3

CORK TO LIMERICK (1 HOUR, 30 MINUTES)

From Cork, travel north on the N20 before joining the N21 and M20 into Limerick. Set in the Munster province, Limerick is well known for its old town (St Mary's Cathedral and St John's Square).

Take some time to visit the historic King John's Castle on the River Shannon before having lunch at The Glen

Tavern. If you time your visit, you could also watch Munster play at Thomond Park Stadium - one of world rugby's spiritual homes.



TAKE SOME TIME TO VISIT THE HISTORIC KING JOHN'S CASTLE ON THE RIVER SHANNON BEFORE HAVING LUNCH AT THE GLEN TAVERN.

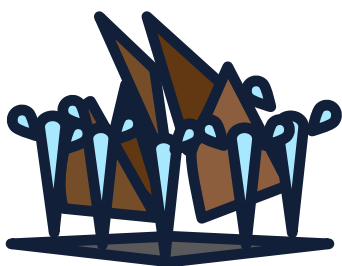


DAY
4

LIMERICK TO GALWAY (1 HOUR, 30 MINUTES)

From Limerick, set your GPS north for the N18 and M18 towards Galway - a harbour city on the edge of the River Corrib and the Atlantic Ocean. Entertain yourself at the 18th century Eyre Square where you can enjoy traditional pubs with live Irish folk music, used famously by Ed Sheeran for his 2017 hit single 'Galway Girl'.

The Latin quarter still retains its medieval city walls with various boutiques and art galleries to explore. Galway is certainly one of the best night's out in Ireland - enjoy a wide range of dining options from across the continent in an environment described as "less conservative" than the rest of the country.



ENTERTAIN YOURSELF AT THE 18TH CENTURY EYRE SQUARE WHERE YOU CAN ENJOY TRADITIONAL PUBS WITH LIVE IRISH FOLK MUSIC, USED FAMOUSLY BY ED SHEERAN FOR HIS 2017 HIT SINGLE 'GALWAY GIRL'.



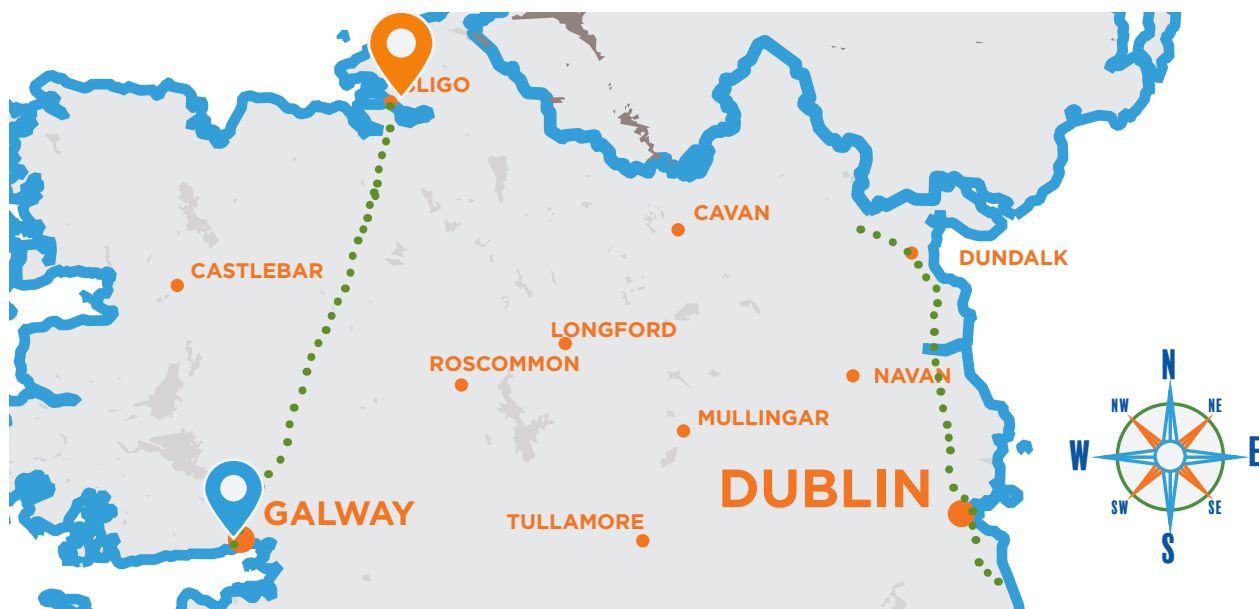


DAY
5

GALWAY TO SLIGO (2 HOURS, 5 MINUTES)

The next day, travel north from Galway along the N17 and N4 towards the coastal seaport of Sligo. Here you can see the wonder of the rugged Irish landscape from Knocknarea and Benbulbin to Strandhill Beach. If the sea air has you feeling a little hungry, pop into Eala Bhan for the best Irish fare in town.

The Sligo Abbey also dates back to the 13th century if you're interested in the history of the area. Enjoy a guided tour of the Abbey which includes Gothic and Renaissance tomb sculpture and the only 15th century high altar left in an Irish monastic church.



THE SLIGO ABBEY ALSO DATES BACK TO THE 13TH CENTURY IF YOU'RE INTERESTED IN THE HISTORY OF THE AREA.



**DAY
6**

SLIGO TO DUNDALK (2 HOURS, 35 MINUTES)

From Sligo, travel east along the N16, which passes into Northern Ireland on the N54, N2 and N53 before returning to Ireland into the county town of Dundalk. In the morning, visit the historic St Patrick's Cathedral which dates back to the 19th century. For a touch of natural beauty, drive towards the Northern Irish border on the R173 from Dundalk to Carlingford Lough. This glacial fjord connects to the Irish Sea; take one of the

many scenic drives or forest walks to get picturesque views of the sea inlet at dawn or dusk.

After a spot of lunch at Fitzpatrick's bar and restaurant, stop by the Cooley Whiskey Visitor Centre for insight into how this famous drink is made.



**AFTER A SPOT OF LUNCH AT FITZPATRICK'S BAR AND RESTAURANT,
STOP BY THE COOLEY WHISKEY VISITOR CENTRE FOR INSIGHT INTO
HOW THIS FAMOUS DRINK IS MADE.**



DAY
7

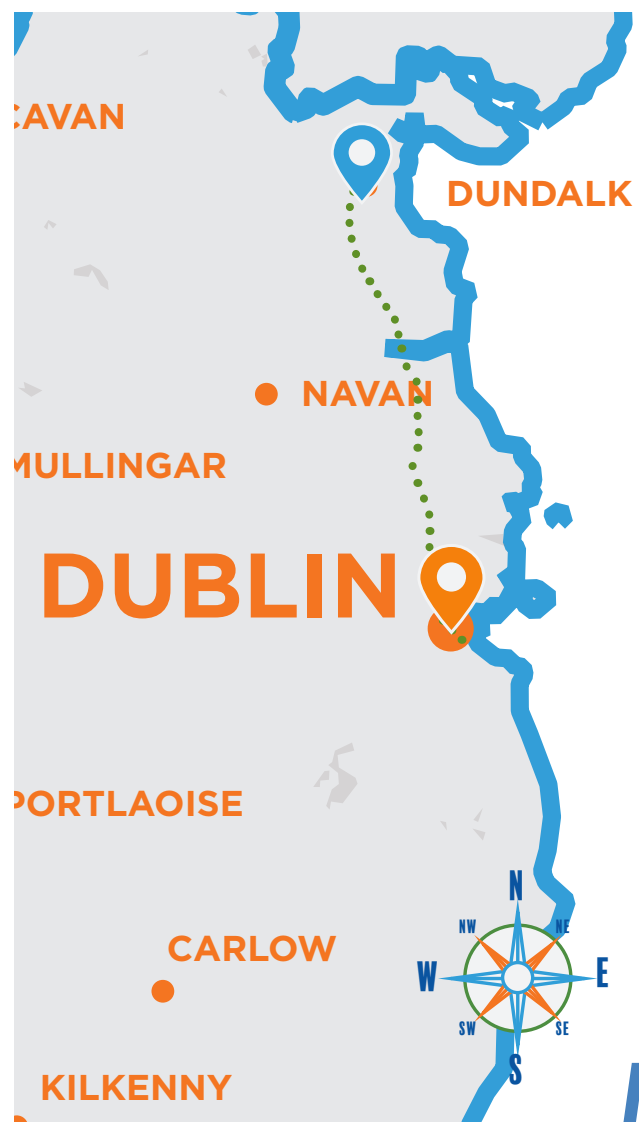
DUNDALK TO DUBLIN (1 HOUR, 10 MINUTES)

The home stretch from Dundalk to Dublin on the M1 hugs the Irish Sea. Before dropping off the car rental at Dublin Airport, take your time to explore the cosmopolitan capital.

Whether you're in the mood for history, art, sport or simply want to relax in the park, Dublin has something to offer you. Highlights include Kilmainham Gaol, a walking tour of the city's main attractions and a tour of Croke Park Stadium - home of Gaelic Football.



**WHETHER YOU'RE IN THE MOOD FOR HISTORY,
ART, SPORT OR SIMPLY WANT TO RELAX IN THE
PARK, DUBLIN HAS SOMETHING TO OFFER YOU.**





CONCLUSION

Ready to explore the historic isle of Ireland? If you're looking for a hire car from Dublin Airport, DriveNow is your first stop for finding the best deals without having to look for that pot of gold!

Visit our site today and experience the DriveNow difference for yourself.



Helping travellers find the best deals on campervan
and car rental since 2003

www.drivenow.com.au